

# J&L mark 5<sup>TM</sup>

Specialty Folder Gluer

*the **Best** in the industry  
is now even **Better***



The openness and accessibility of the new J&L Mark 5 allows the fastest set-ups and highest run speeds in the industry. The Mark 5 is loaded with new features designed to enhance runability and ensure the highest quality of the most difficult boxes.

**ALLIANCE**<sup>®</sup>  
Intelligent Productivity

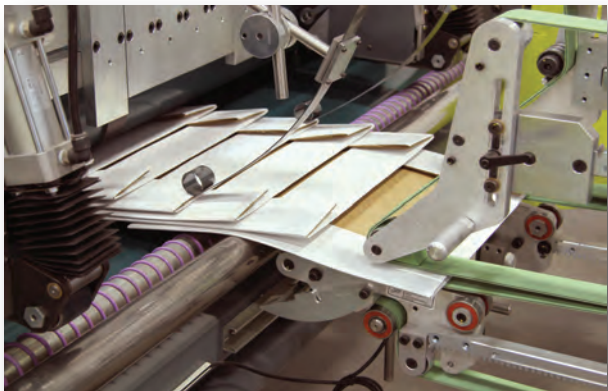
# Setting a New Standard of Quality



Introduced in 1988 as the world's first, fully modular, shaftless, servo-driven Specialty Folder Gluer, the J&L changed the corrugated landscape and set new heights for flexibility, speed and performance. Coupled with a skilled and highly responsive US centered-service organization, satisfied customers expanded their businesses on the basis of the J&L's capabilities.



The J&L Company joined Alliance Machine Systems International, LLC in 1995 as part of its ever-widening International product line. For more than 30 years Alliance has produced over 10,000 machines for the corrugated industry, all focused on raising the productivity bar, including new versions of the J&L.



Now, our fifth generation J&L Specialty Folder Gluer, the J&L Mark 5, represents the unmatched, premier solution for the innovative box maker committed to delivering superior value to its customers. Preserving the robust, open, and fast-set design, while adding, expanding and improving the range of capability and accuracy, the Mark 5 is truly unmatched in the box market today.





the most *Advanced Specialty Folder Gluer*  
with the *highest Performance*

**Openness and Accessibility**

As with its predecessors, the Mark 5 architecture provides fantastic visibility and accessibility for operators. Free of doors, windows and mechanical guarding, the open architecture offers the best sightlines in the industry, allowing the operator to visually monitor production and see trouble before it shuts down the machine. Each module has been engineered to provide the operators with the maximum amount of room to set-up tooling. Moving large pieces of tooling in and out of a module is a breeze. Safety rated light curtains prevent entry into hazardous areas while the machine is in production.

**Fast Set-ups**

When it comes to Specialty Folder Gluers, auto-set doesn't necessarily mean faster set. For most specialty boxes auto-set means slow set. This is not the case with the Mark 5. Unencumbered by lead screws, tooling collisions and repeated jogging of motors, plus all the other gyrations that so-called "auto-set" machines require to adjust the carrier rails, the Mark 5's open design allows operators to quickly adjust tooling and set-up the module correctly the first time. Once set, the operators can jog a set-up box through the module, then move on to the next module.

**Base Configuration**

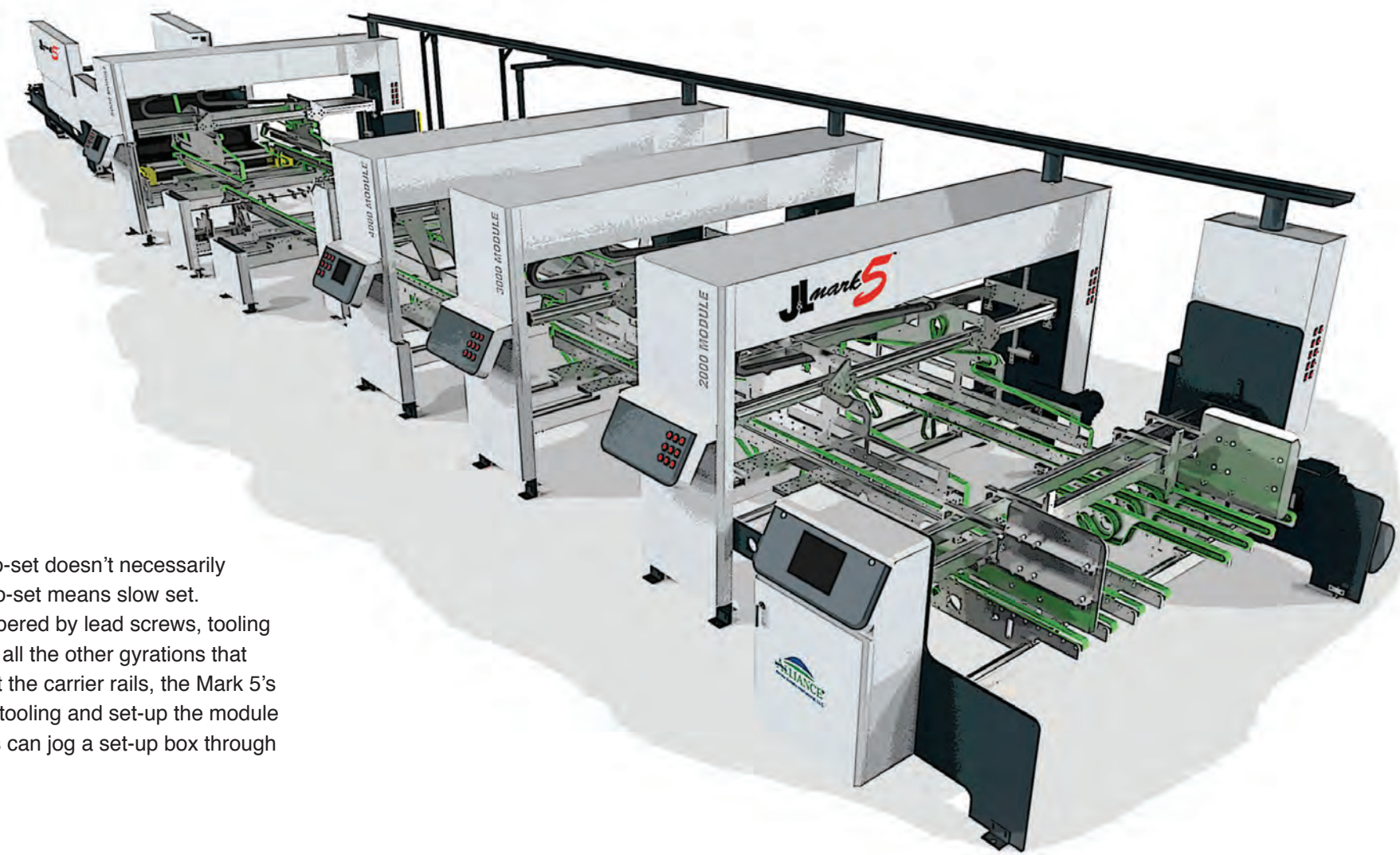
The Mark 5 is available in six sizes ranging from 80" up to 190" in width. The base configurations of all machine sizes run Straight-lines, Lock Bottoms, Tubes, Four-Corner, Infold and Outfold trays. Boxes can be over-stacked or under-stacked in the compression section. To accommodate stacking of longer boxes, the compression section is designed to be mobile and can be moved away from the main machine by the operator.

**Controls Longevity**

Mechanically robust enough to run for decades, the Mark 5 Electronic Controls have been specified and selected to ensure supportability well beyond the average life of most electronic components today. This means backward compatible updates, replacement component availability and true supportability to match the projected mechanical life.

**Specifications**

Model	Size	Machine Length	Machine Width	Max Belt Speed
2000	80"	72' 5"	11' 10"	1,000 ft / min
2900	115"	72' 5"	14' 9"	1,000 ft / min
3300	130"	72' 5"	16' 1"	1,000 ft / min
3800	150"	72' 5"	17' 9"	1,000 ft / min
4300	170"	72' 5"	19' 6"	1,000 ft / min
4800	190"	72' 5"	21' 2"	1,000 ft / min



**Optional Modules**

**Box Ejector Module** - The Box Ejector Module is designed to interface with all of today's inspection and quality-control systems. When a box is flagged as having a defect, the box ejector will divert that box out of the flow, negating the need for the bundling operator to sort and remove it.

**Crush Roller Module** - The Crush Roller Module passes each folded box through an adjustable pressure nip point. The nip point utilizes two chromed rollers, with operator adjustable nip pressure, to flatten the boxes prior to entering the compression section. This allows a more dense compression shingle, higher speeds and ultimately flatter bundles to the end user.

**Tooling Module** - The Tooling Module contains a set of adjustable 90" long carriers that present the box for labeling, taping, and complicated prefolding. As the industry moves toward shelf-ready packaging and this process becomes more complex, the Mark 5 stands ready with a flexible design able to accommodate updates and additions.

**Tanabe Trifeeder Module** - As with previous generations the Mark 5 interfaces very well with the Tanabe Trifeeder. The roll in/out option of the Tanabe Trifeeder allows offline set-up while the Mark 5 can be running traditional specialty jobs.



Video Clip

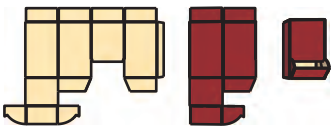
<http://www.iplayerhd.com/player/mark5video>



Imagine the Box Styles

Open, Fast & Flexible

Bin Box



Auto RSC Bottom



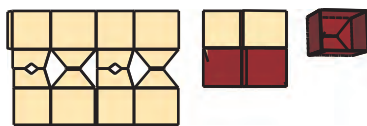
Auto Lock Bottom



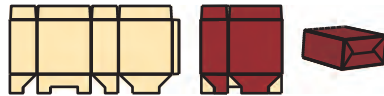
Simulated Six-CornerTray Type II



Tri-Fold Box



Snap Lock Bottom Type I



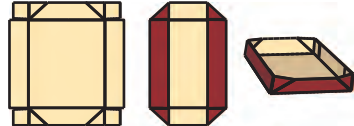
Four-Corner Post Tray



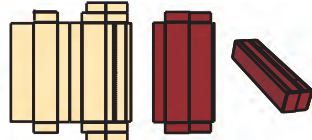
Six-Corner Tray



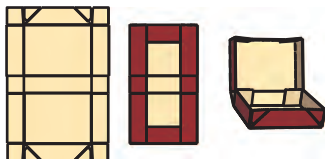
Four-Corner Out Fold Tray Type I



Tube Tray with FOL Top

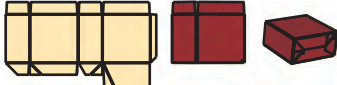


Simulated Six-Corner Tray Type I

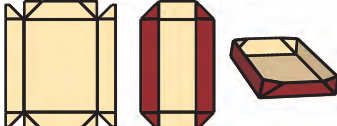


“For many more box styles refer to the range charts.”

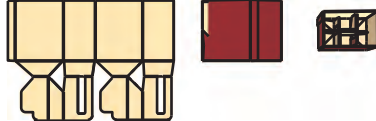
Full Bottom Auto Lock Bottom



Four-Corner Out Fold Tray Type II



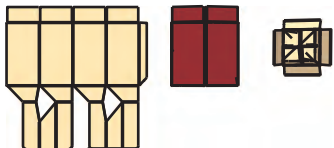
Six-Cell Auto Bottom



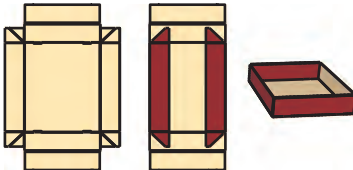
Triangle Auto Bottom



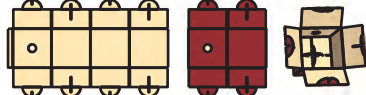
Four-Cell Auto Bottom Type II



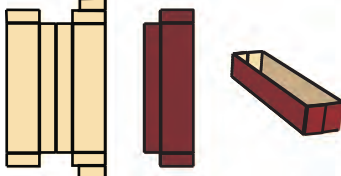
Four-Corner Rollover Tuck Tray



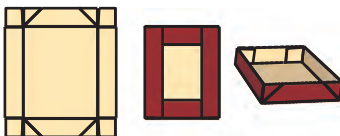
Spool Box



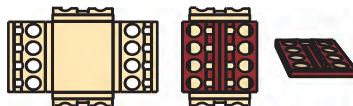
Tube Tray



Four-Corner Infold Tray Type I



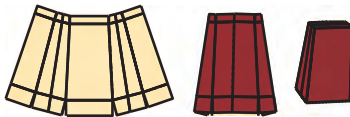
Twelve-Cell Tray



Three-Cell



Trapezoidal Box



Four-Corner Tray with Lid



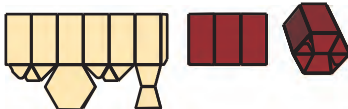
File Box



Handled Top



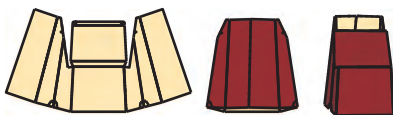
Hexagonal Lock Bottom



Snap Lock Bottom Type II



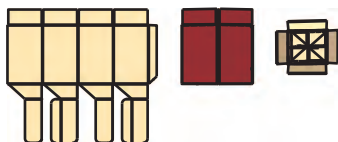
Trapezoidal Base



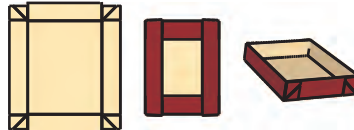
Tripod Seat



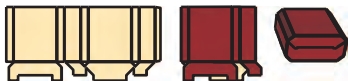
Four-Cell Auto Bottom Type I



Four-Corner Infold Tray Type II



Octagonal Snap Lock Bottom



Split Pack



Six-Pack Auto Bottom



RSC with Partition



# Customer Service

## Installation Services

- ▶ *Project Planning*
- ▶ *Project Management*
- ▶ *Installation Labor*
- ▶ *Machine Relocation*
- ▶ *Machine Commissioning*



## Technical Assistance

Technical assistance is available around the clock, seven days a week. Please call our toll-free number for assistance. North America toll-free at 888 768-2200 or 509 535-0356.



## Preventive Maintenance

Preventive maintenance results in reduced downtime and improved productivity. We can develop standard or custom preventive maintenance programs to ensure your Alliance equipment stays in peak running condition.



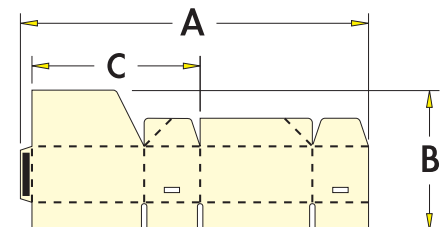
## Ready RESERVE

Parts Kits are based on specific criteria to keep machines online. Three spare parts kit choices are available to sustain your level of on-site service maintenance. Alliance parts kits make it easy to source and secure the genuine parts you may need before you require them.



## Box Design

If you need help determining the optimum run speed for a new box style on your J&L Mark 5 Specialty Folder Gluer, give us a call and our technicians will assist you with optimum design and set-up.



## More Information

Call toll-free 800 356-8901 in North America or visit our web site at [www.alliancellc.net](http://www.alliancellc.net)

[www.alliancellc.net](http://www.alliancellc.net)



Alliance Machine Systems International, LLC  
5303 E Desmet Avenue  
Spokane, Washington 99212  
(001) 509 535-0356  
[info@alliancellc.net](mailto:info@alliancellc.net)

