

ITF₂₉₅₀

Technical data	ITF 2950
Min. sheet size	250 x 600 mm
Max. sheet size	1400 x 2950 mm
Min. stack height	500 mm
Max. stack height	2000 mm
Max. stack weight	1600 KG
Electrical usage	25 kW
Entry height	300 - 400 mm
Max speed (s/min)	up to 500



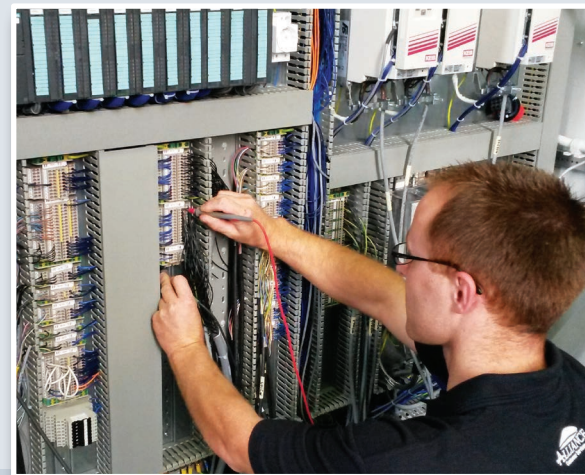
FEEDERS



PALLETISERS



SEPARATORS



SERVICE





Top of stack fingers
for controlled board movement



Pre-hopper tamper
with moveable gate for good alining of the board

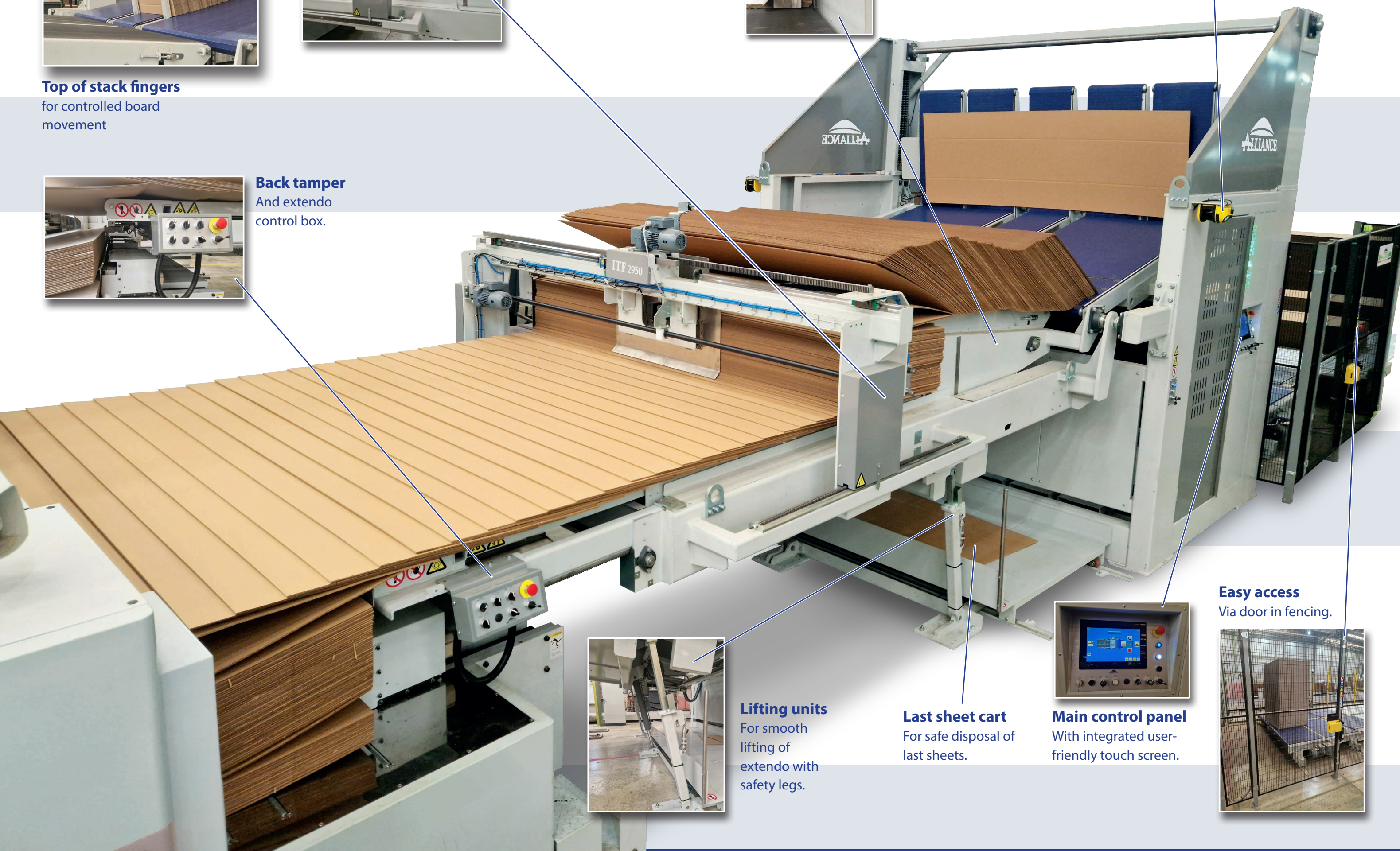


Moveable upper-deck
with back tamper for high capacity

Scanners
for safe access to extendo area



Back tamper
And extendo control box.



Lifting units
For smooth lifting of extendo with safety legs.

Last sheet cart
For safe disposal of last sheets.



Main control panel
With integrated user-friendly touch screen.



Easy access
Via door in fencing.